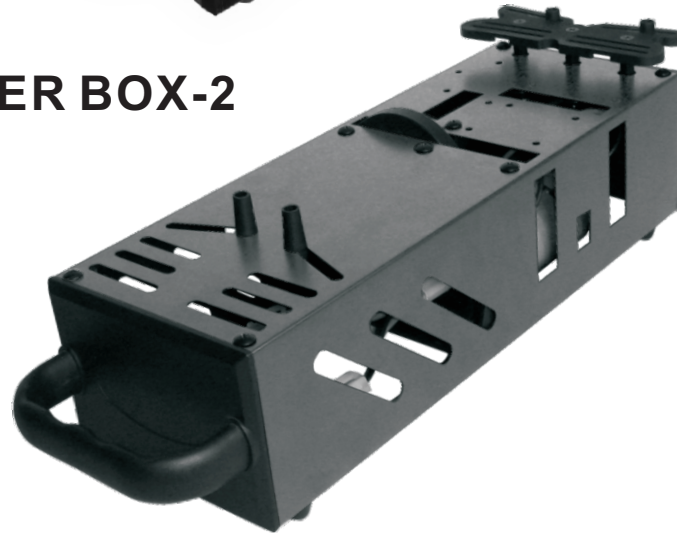


INSTRUCTION MANUAL

STARTER BOX-1



STARTER BOX-2



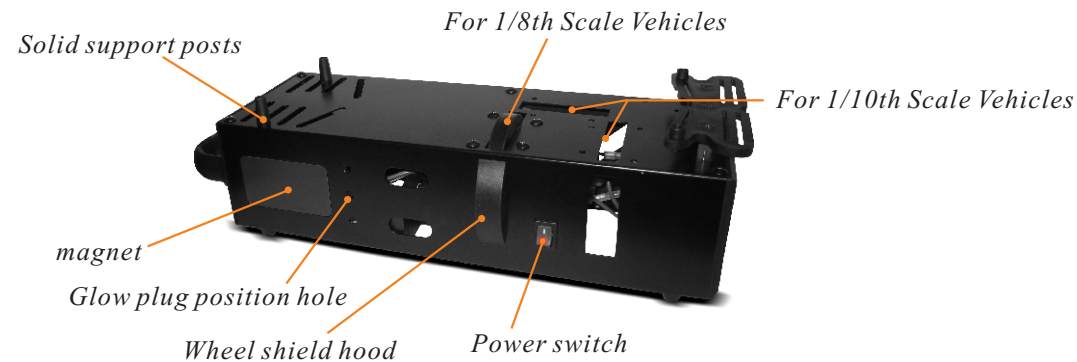
To reduce the risk of body injury, this starter box is only recommended to experienced operators over 14 ages. Read and understand all instructions before use!

20110910



Features:

1. Quick power start response and easy operation
2. Magnet installed for easy screws collection.
3. Three Glow plug position holes provide good resting for glow plugs while you perform maintenance.
4. High powerful motor , two 7.2V 1800mAH batteries or one 12V 7A accumulator power supply required
5. Long solid support posts and solid pressure plate for high stability of vehicle landing.



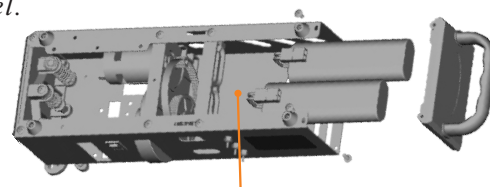
Tip:

*Many colour styles are available. (Black, Purple Red, Blue)
All accessories of this starter box are available at factory. Please refer a full part list in this manual.*

To use this starter box

*This starter box requires to be powered with two 7.2V/1800mAH batteries or one 12V/7A accumulator or above.
Always check the battery power. Engine is most likely to stall and start procedure may prove difficult by low battery level.*

- Use 12V Battery
- Use 12V Storage Battery X1
- Use 7.2V Ni-Cd Battery X2

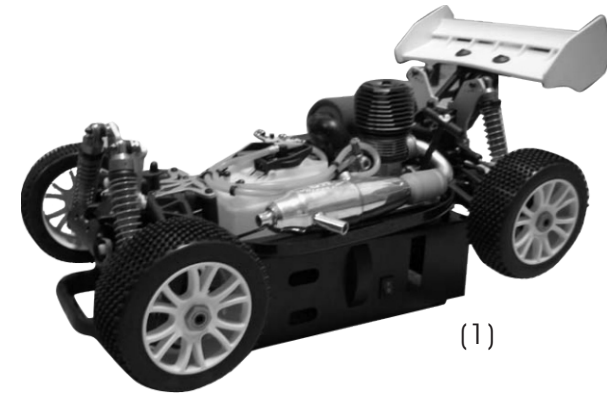


To install battery in place

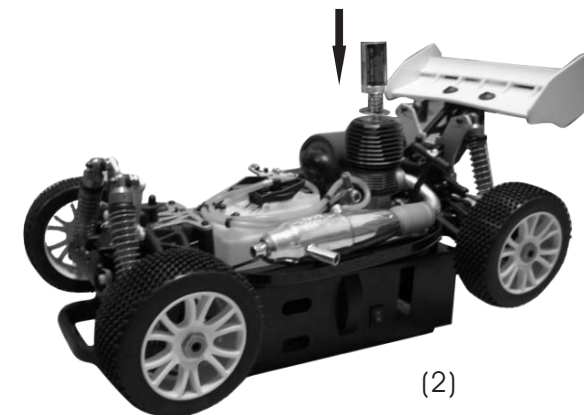
Operation Instructions:

1. Connect wires complying with "Red +" to "Red+" and "Black-" to "Black-" after the battery pack is installed in place. Switch it on and push pressure plate down, then observe that the drive wheel rotates anti-clockwise. After above procedures prove smooth place your vehicle onto this start box. (See Figure.1 as below)

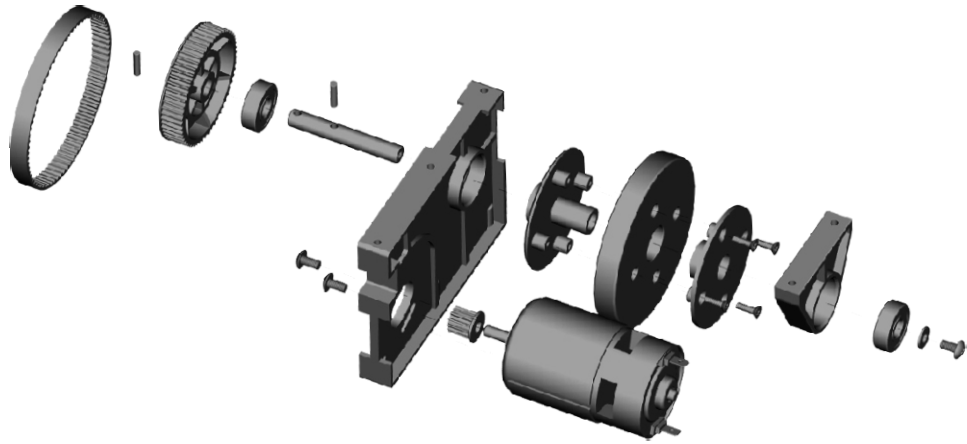
Note: For different engines installment, this figure is for reference only!



2. Four support posts are perfect for your vehicle landing. Make sure engine flywheel is level with drive wheel on the starter box. Make sure whether your vehicle safely lands on. (See Figure.2) Attach a high quality glow plug and excite your engine with the glow plug.



Common Drive System Assembly View



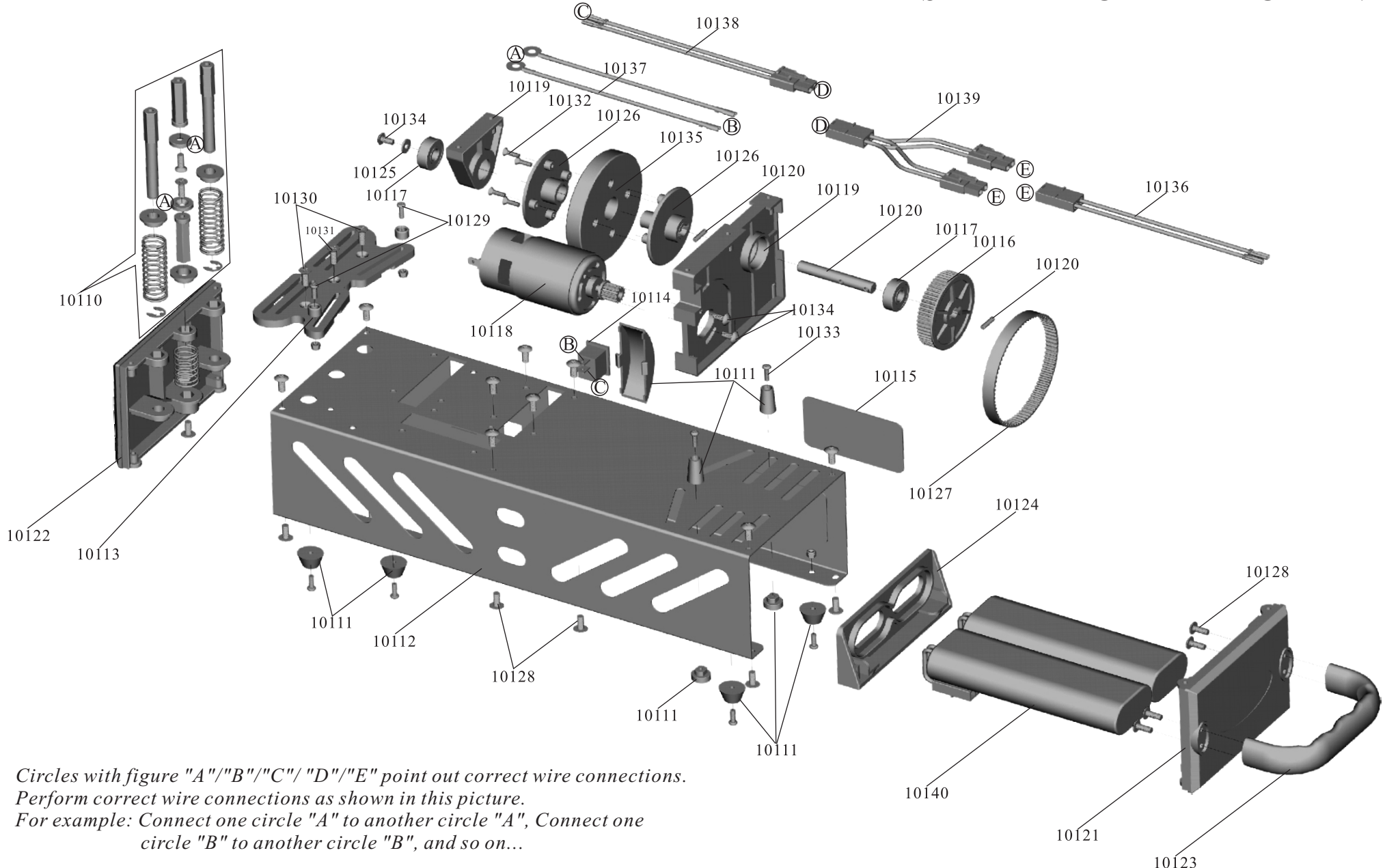
Common Part List-1

<p>10110 10110A-Spring Holder A 10110B-Spring Holder B 10110C-Pressure Plate Post 10110D-Supporter 10110E-Copper Bushing 10110F- E-clip 10110G-Spring A 10110H-Spring B</p>	<p>10111 10111A-Button Foot 10111B-Wheel Shield Hood 10111C-Hold Post A 10111D-Hold Post B</p>		
<p>10112-Shell For 1 Only</p>	<p>10113-Pressure Plate</p>	<p>10114-Power Switch</p>	<p>10115-Magnet</p>
<p>10116-Sub-Drive Wheel</p>	<p>10117-Rolling Bearing 22*8*7</p>	<p>10118-Motor</p>	<p>10119-Motor Mount</p>

Common Part List-2

<p>10120-Sub-Drive Wheel Shaft/Pins</p>	<p>10121-Right Side Plate</p>	<p>10122-Left Side Plate</p>	<p>10123-Handle</p>
<p>10124-Battery Plate</p>	<p>10125-Washer</p>	<p>10126-Drive Wheel Mount A/B</p>	<p>10127-Drive Belt</p>
<p>10128-Cap Head Tapping Screw M4*10</p>	<p>10129-Button-head Cap Mechanical Screw M3*9</p>	<p>10130-Flat Head Mechanical Screw M4*10</p>	<p>10131-Flat Head tapping Screw M4*10</p>
<p>10132-Flat Head Mechanical Screw M3*10</p>	<p>10133-Button-head Cap tapping Screw M3*10</p>	<p>10134-Cap Head Mechanical Screw M4*8</p>	<p>10135-Drive Wheel</p>
<p>10136-Wiring A</p>	<p>10137-Wiring B</p>	<p>10138-Wiring C</p>	<p>10139-Wiring D</p>
<p>10140-Battery Pack</p>	<p>10141-Accumulator</p>	<p>10911-Shell For 2 Only</p>	

STARTER BOX-1 EXPLODED VIEW



Circles with figure "A"/"B"/"C"/ "D"/"E" point out correct wire connections.
 Perform correct wire connections as shown in this picture.
 For example: Connect one circle "A" to another circle "A", Connect one
 circle "B" to another circle "B", and so on...

STARTER BOX-2 EXPLODED VIEW

*Circles with figure "A"/"B"/"C"/"D"/"E" point out correct wire connections.
Perform correct wire connections as shown in this picture.
For example: Connect one circle "A" to another circle "A", Connect one
circle "B" to another circle "B", and so on...*

